

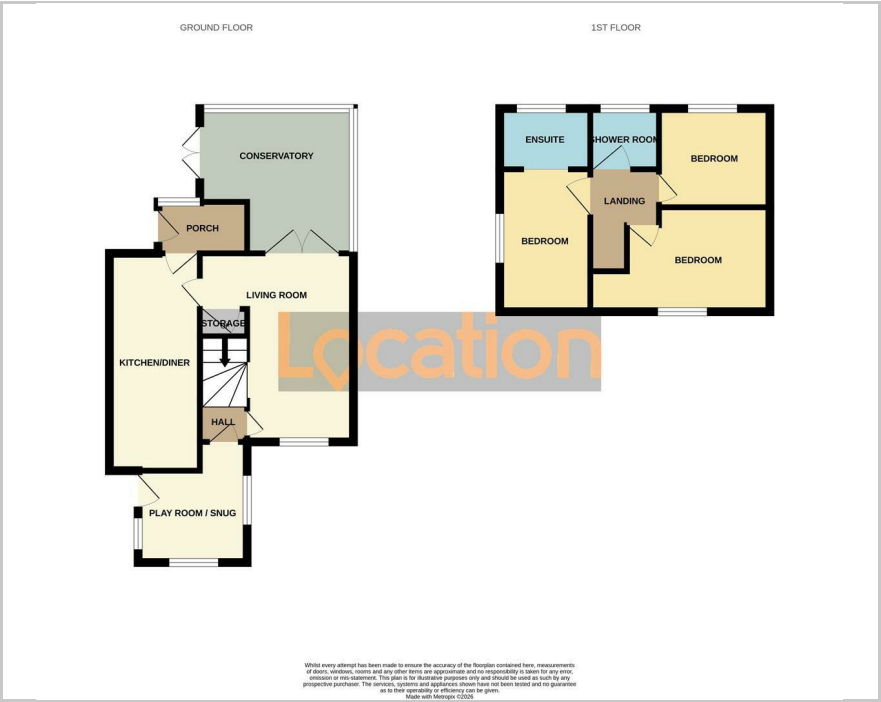
Location



27 Mansfield Road, Mansfield, NG21 9NL
Offers In The Region Of £217,500



Floor Plan



Area Map



These particulars, whilst believed to be accurate are set out as a general outline only for guidance and do not constitute any part of an offer or contract. Intending purchasers should not rely on them as statements of representation of fact, but must satisfy themselves by inspection or otherwise as to their accuracy. No person in this firm's employment has the authority to make or give any representation or warranty in respect of the property.

13-15 Albert Street, Mansfield, NG18 1EA
Tel: 01623654555 Email: enquires@locationmansfield.co.uk www.locationestateagency.co.uk

Accommodation

- End Terrace Home
- Three Bedroom
- Two Bathroom
- Two Receptions
- Garage & Work Area
- Well Presented & Maintained
- Popular Village Location
- Close To Sherwood Forest
- Council Tax Band A

Viewing

Please contact our Mansfield Sales Office on 01623654555 if you wish to arrange a viewing appointment for this property or require further information.

Energy Efficiency Graph

